

# Install Instructions



**plexishield**  
for restaurants



## Step 1

Peel off the protective masking on the acrylic plexishield.



## Step 2

Take one of the legs and stand it on a narrow surface and turn it as shown on the picture.



## Step 3

Insert a bolt into the upper hole of the leg and spread a bit as shown on the picture.



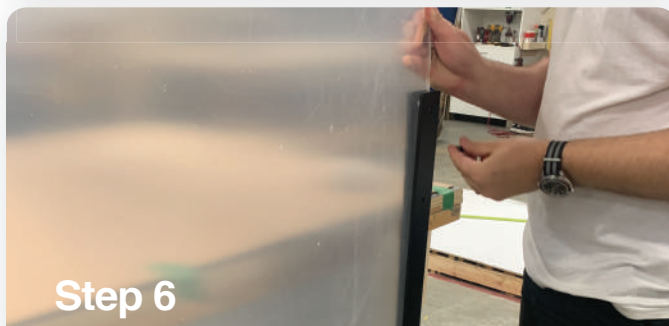
## Step 4

Make sure the metal legs are flat on a table surface and the acrylic panel is seated all the way down in the slot.



## Step 5

Fit a nut on the bolt on the other side of the leg but do not tighten it yet.



## Step 6

Take the other leg, align it with the first one and install the bolt and plexishield as described in Step 4 & Step 5.



## Step 7

Put screws in the lower holes on the legs, put nuts on and tighten with the tools provided.



## Step 8

Place the shield onto the counter in the desired location and press the feet down firmly.

# Install Instructions



**plexishield**  
for restaurants



## 6' Floor Standing Divider

To assemble 6" Floor Standing Unit, please, put a bolt into top hole on the leg and top hole on the plexishield.



## 7' Floor Standing Divider

To assemble 7" Floor Standing Unit, please, put a bolt into top hole on the leg and third hole from the top on the plexishield.