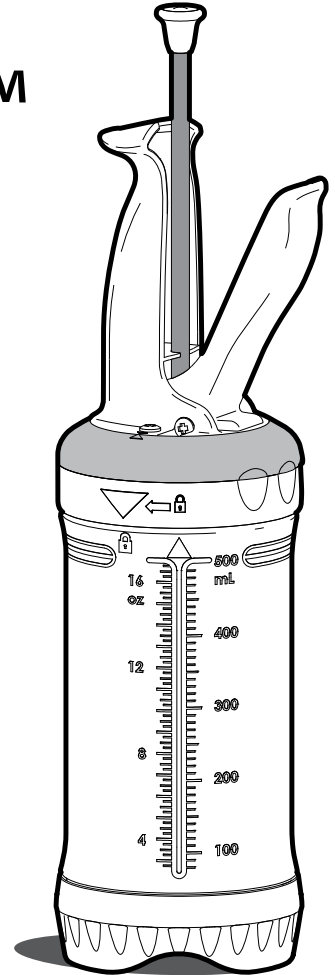








PORTION PAL™

User Guide

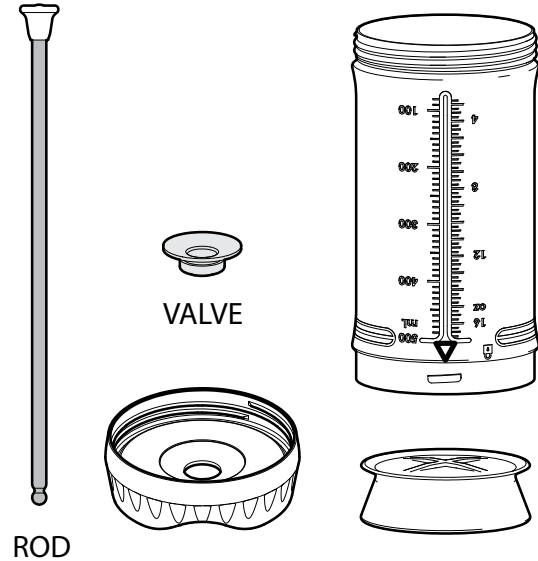


| | | |
|---|-------------------------------|----|
|  | Preparation and Filling | 4 |
|  | Dispensing | 10 |
|  | Disassembly for Cleaning..... | 14 |
|  | Changing Portion Ring | 16 |

PREPARATION AND FILLING

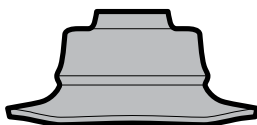
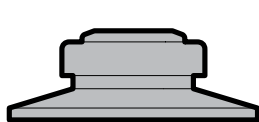


**WASH ALL PARTS IN
HOT, SOAPY WATER
BEFORE FIRST USE**



1

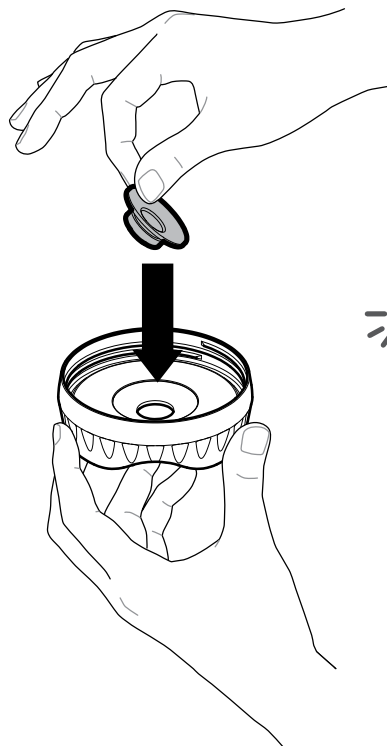
INSPECT VALVE



VALVE IS INSIDE-OUT

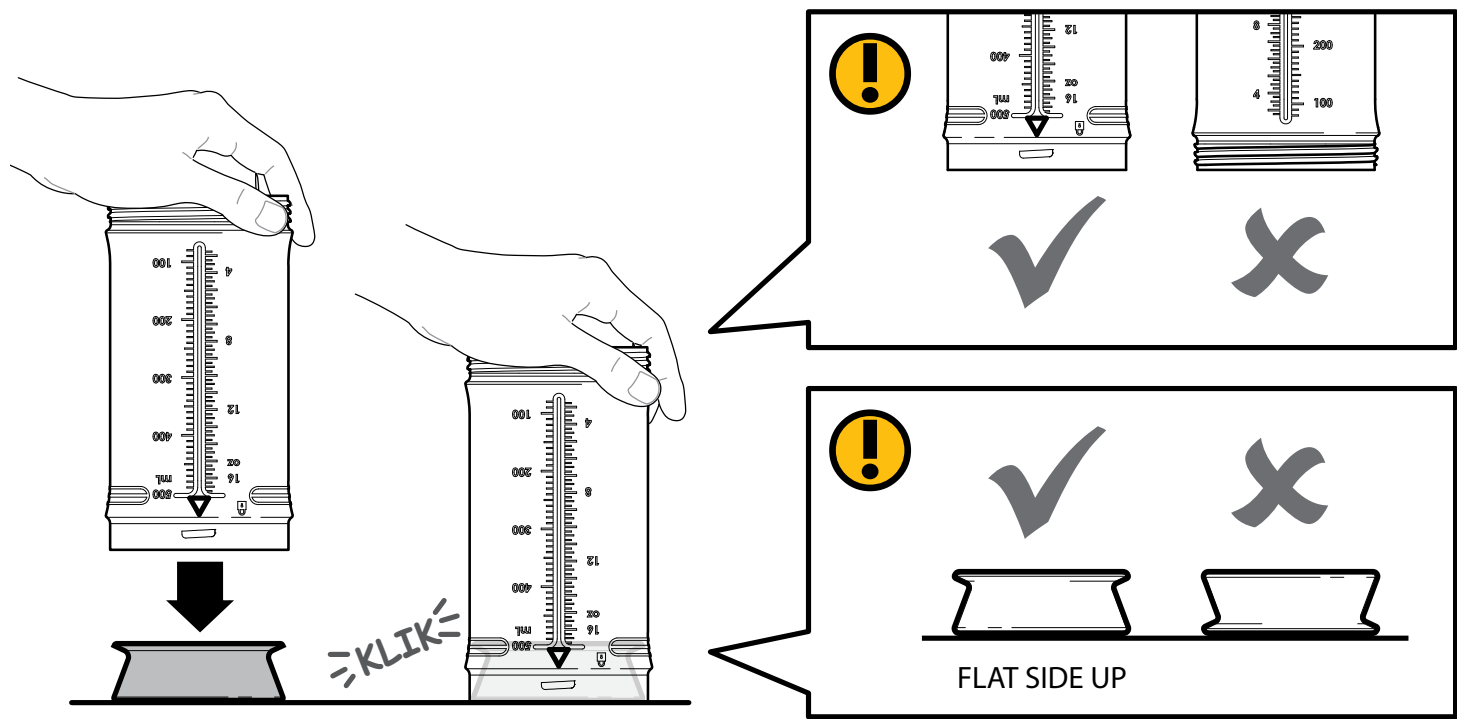
PREPARATION AND FILLING

2

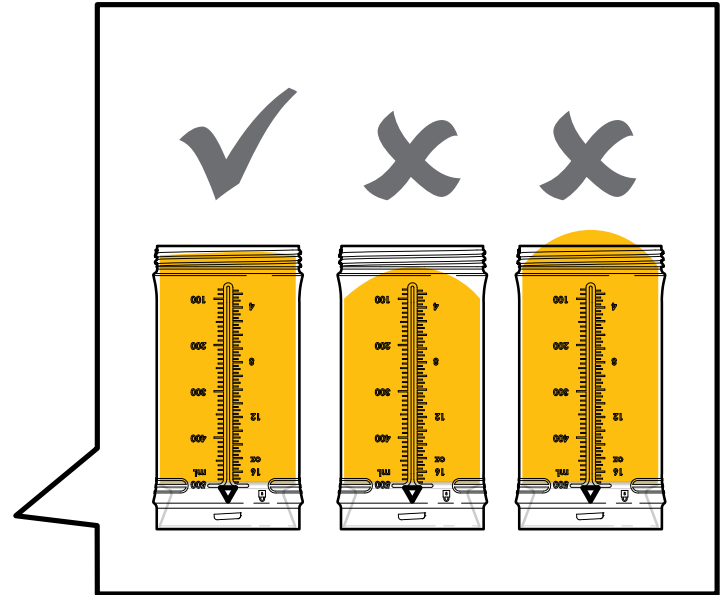
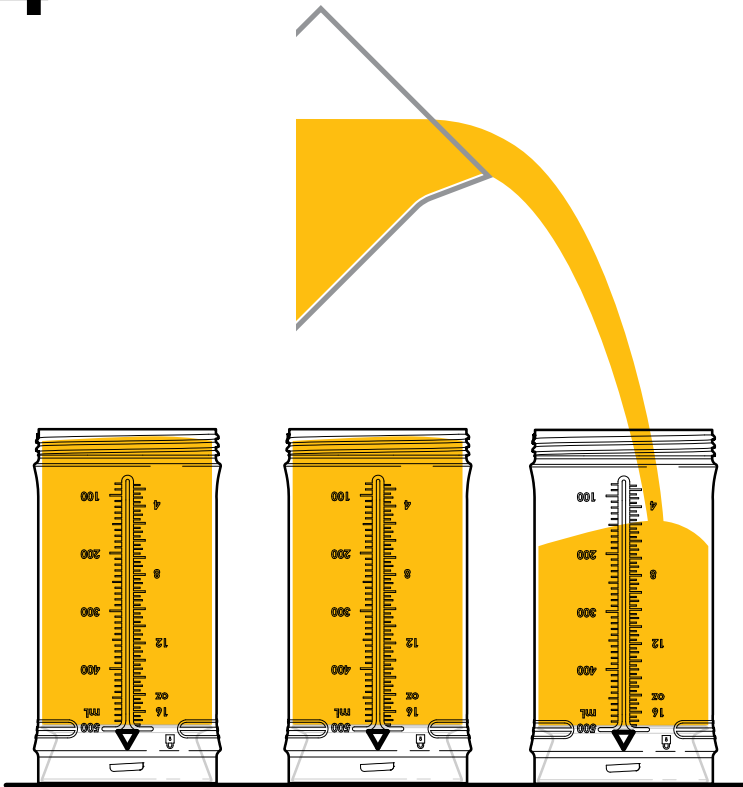


PREPARATION AND FILLING

3



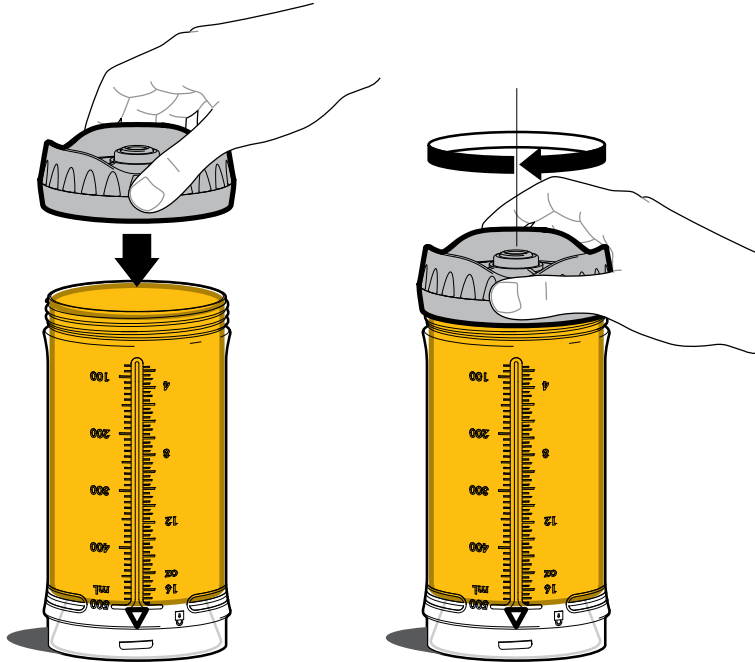
4



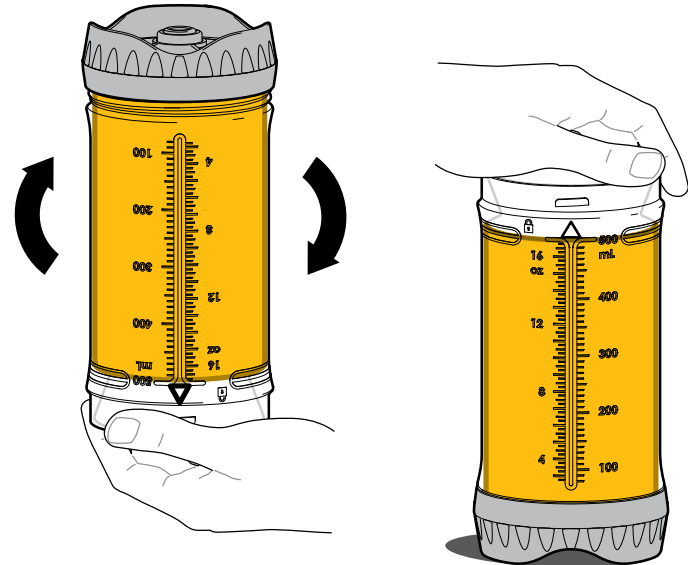
PRE-FILL ALL BOTTLES

PREPARATION AND FILLING

5



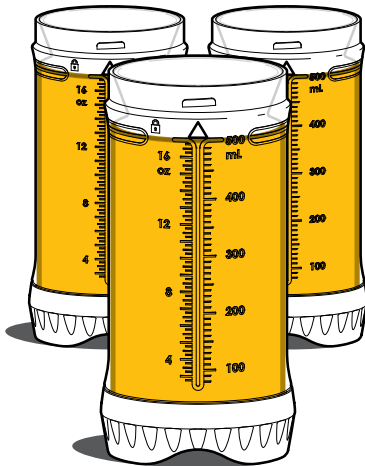
6



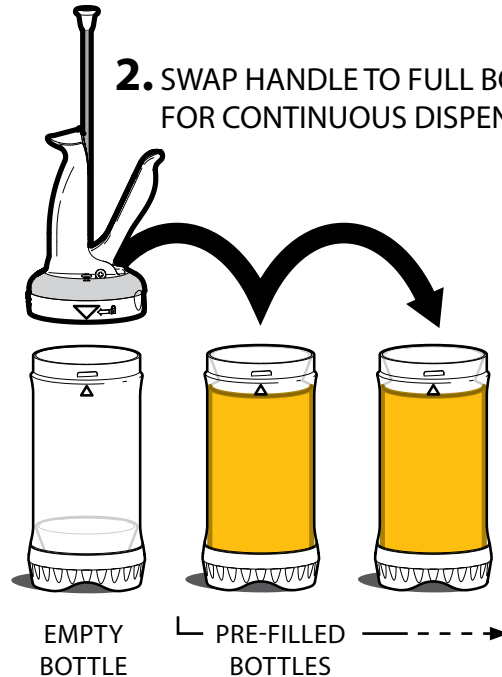
PLACE HAND UNDER
BOTTLE WHEN FLIPPING

PORTION PAL WORKFLOW

1. PRE-FILL ALL BOTTLES IN ADVANCE

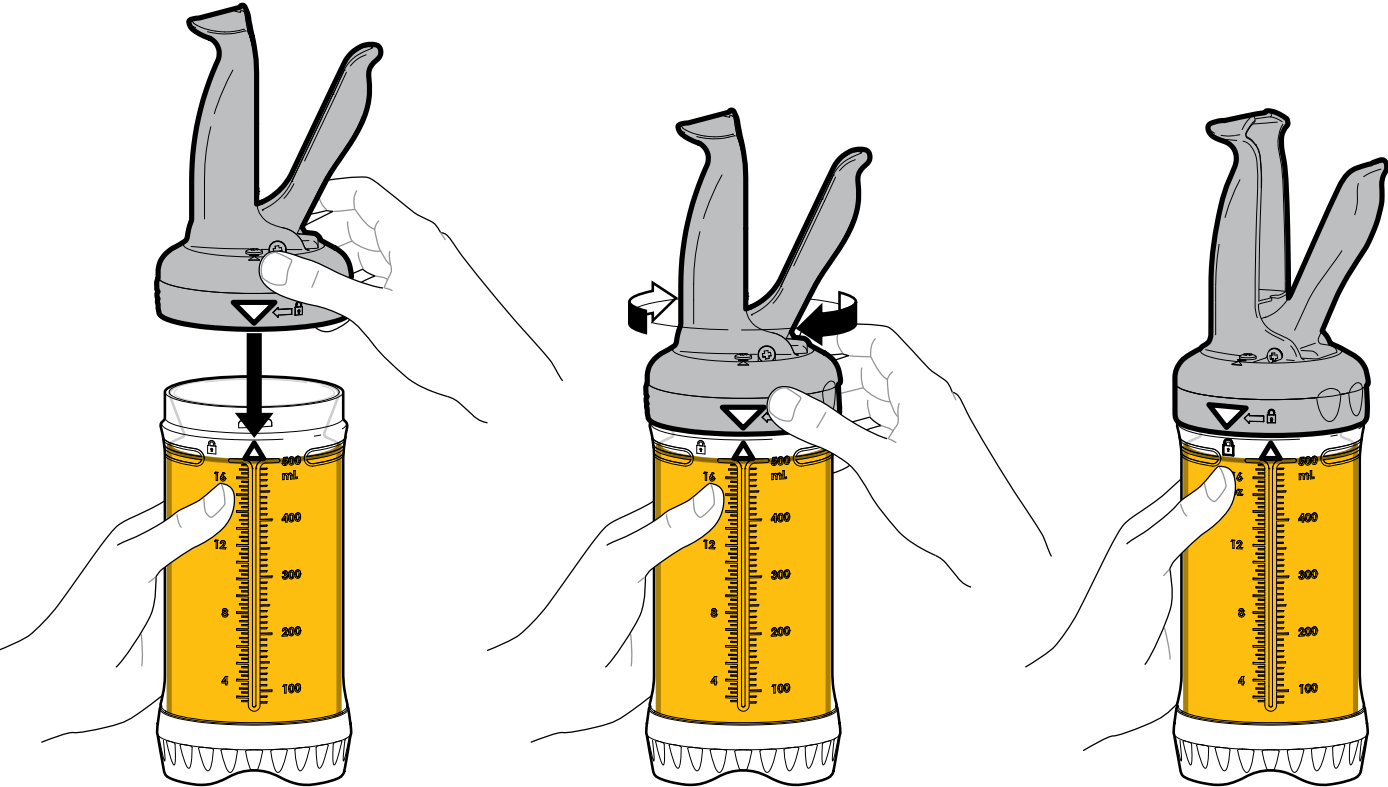


2. SWAP HANDLE TO FULL BOTTLES FOR CONTINUOUS DISPENSING

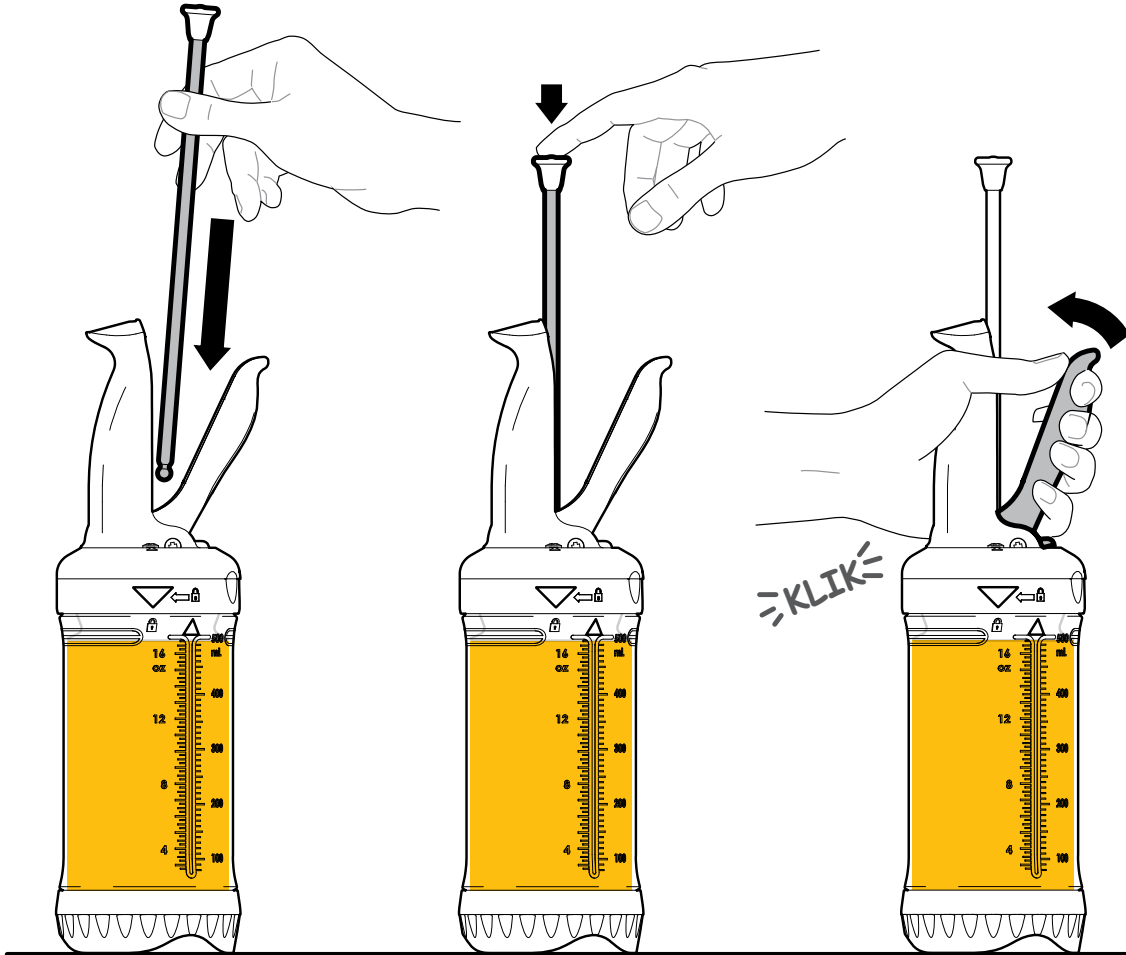


DISPENSING

1

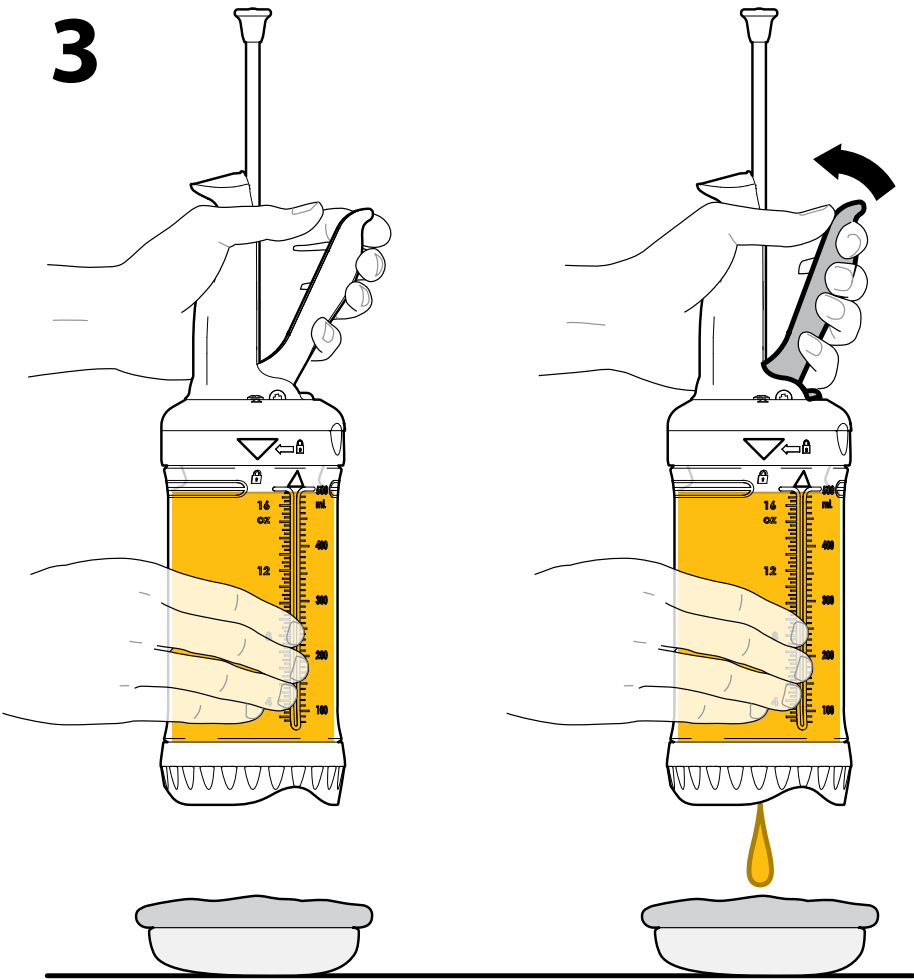


2



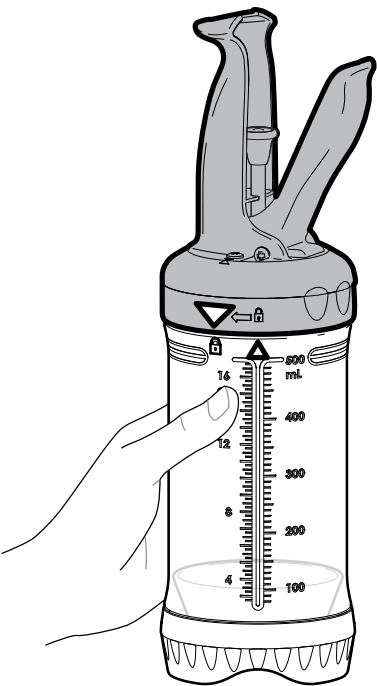
DISPENSING

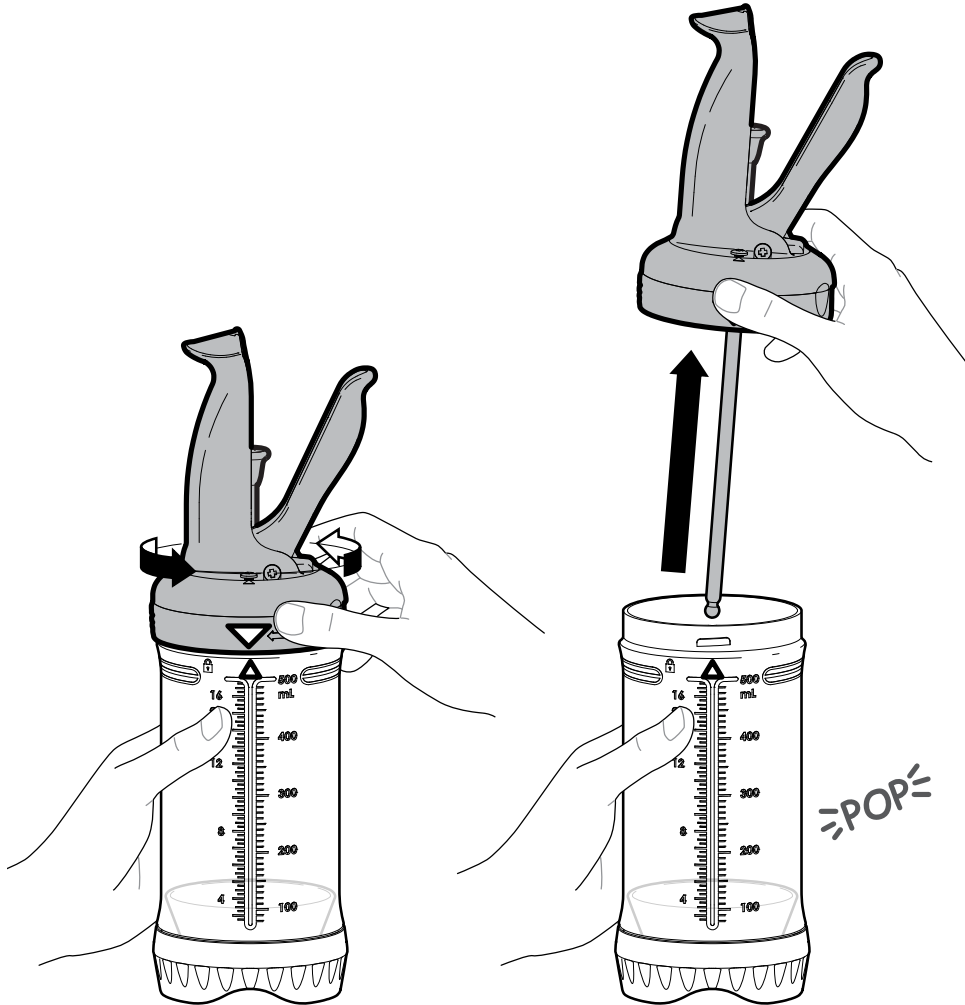
3



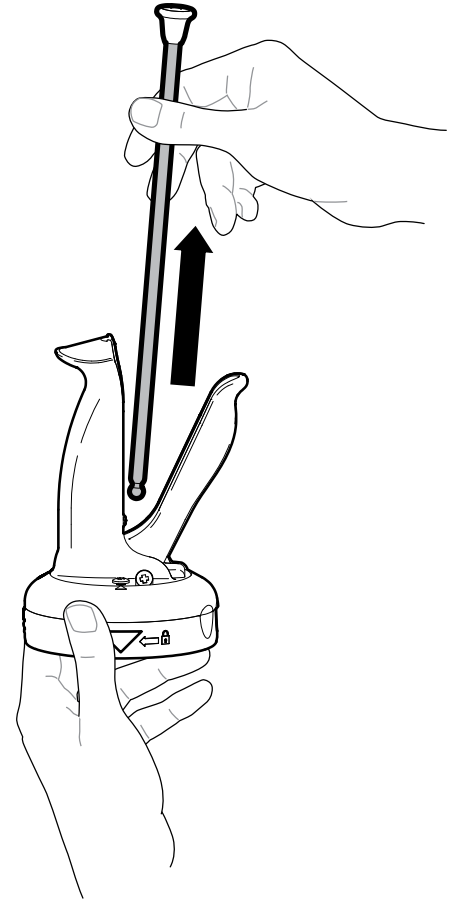
4

EMPTY BOTTLE



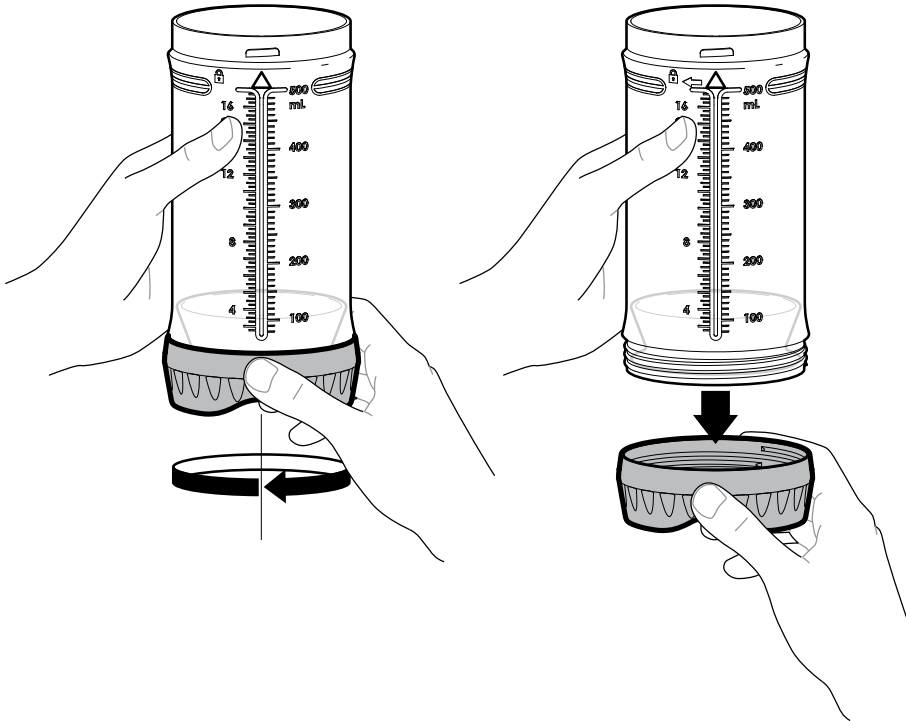


5

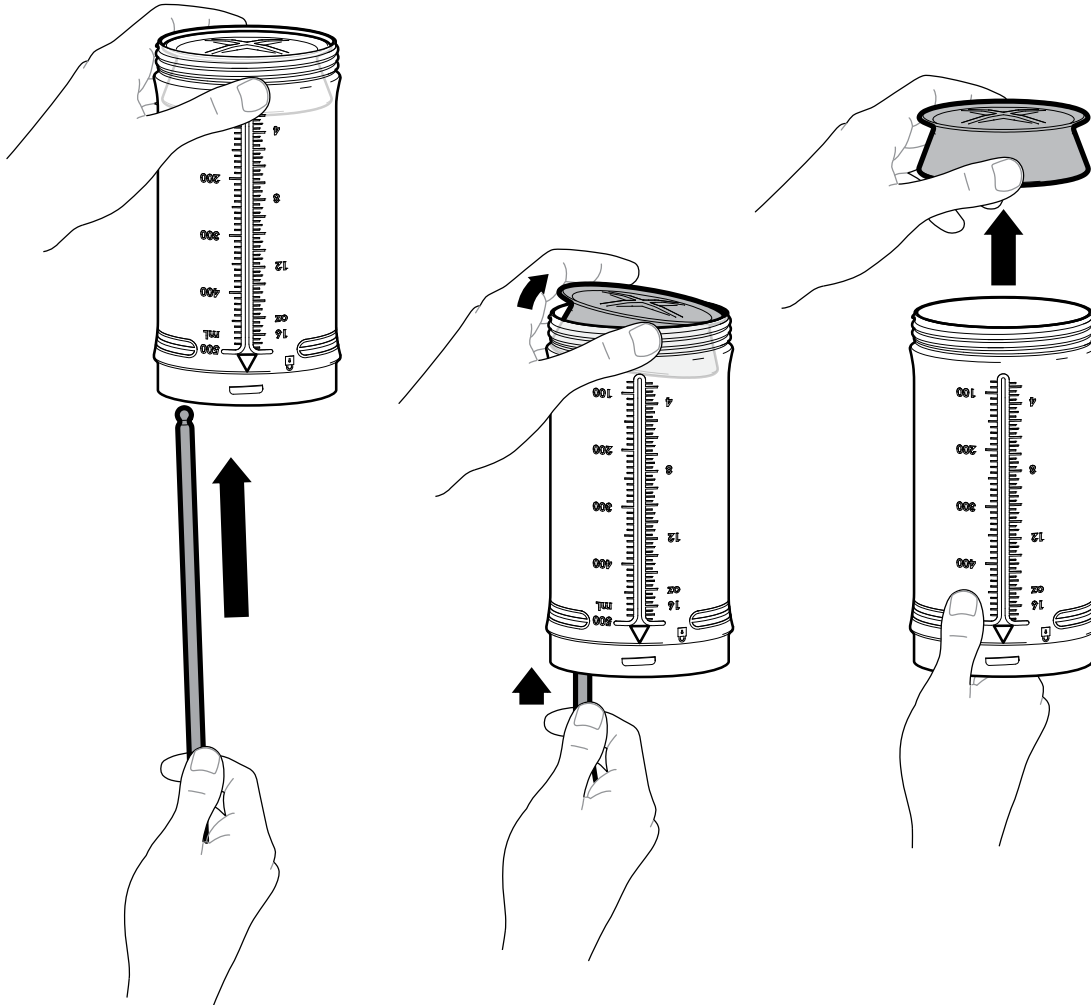


DISASSEMBLY FOR CLEANING

1

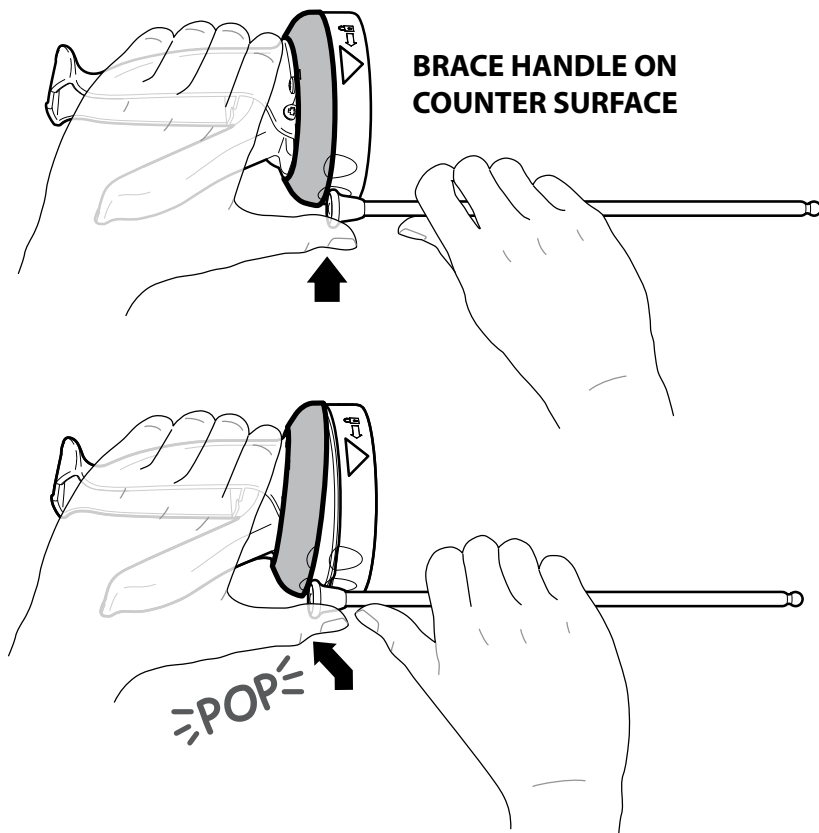


2

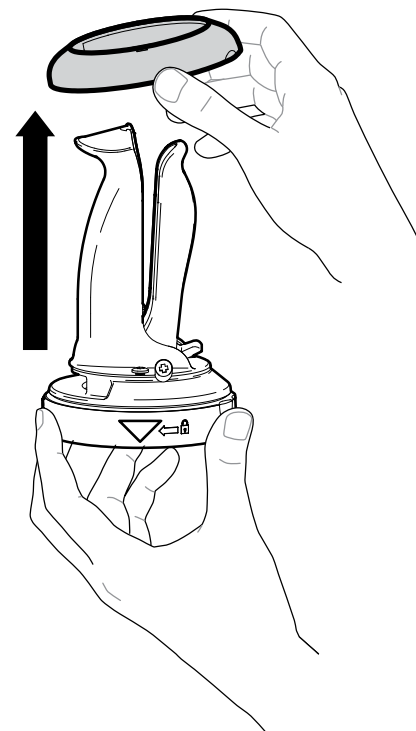


CHANGING PORTION RING

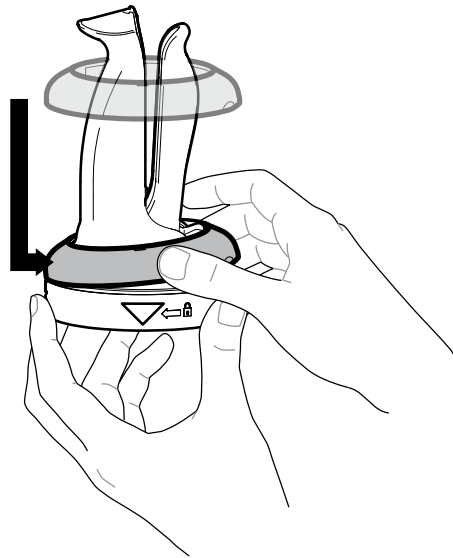
1



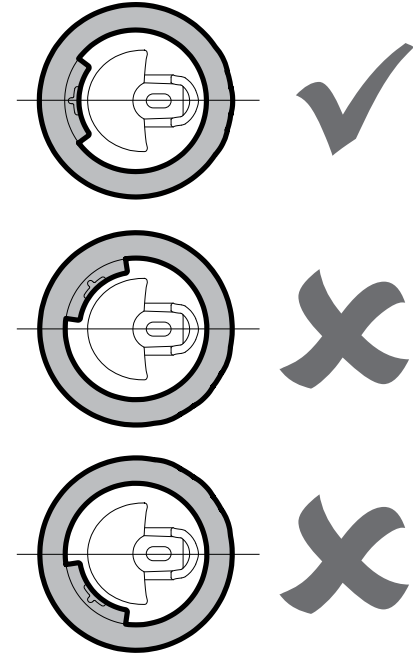
2



3



RING ALIGNMENT TOP VIEW



CHANGING PORTION RING

4



