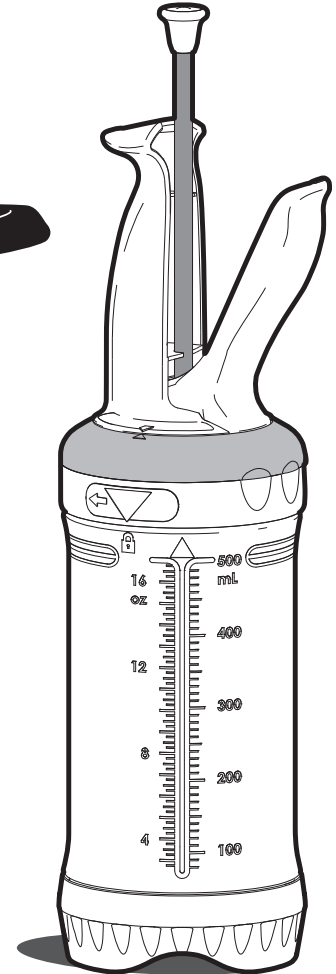









PORTION PAL™

EXACT PORTION EVERY TIME

User Guide

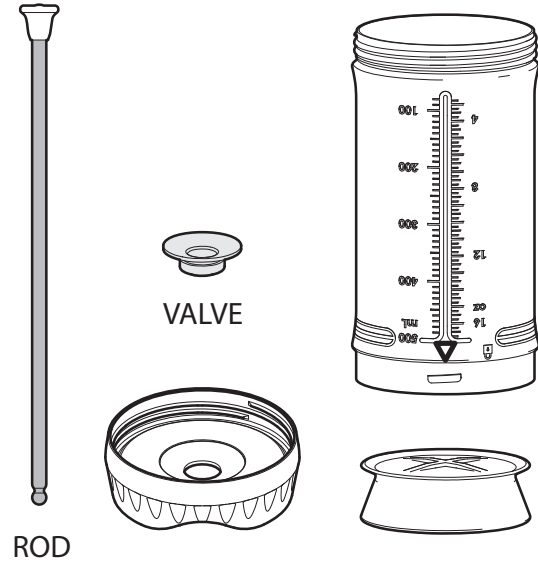


	Preparation and Filling	4
	Dispensing	10
	Disassembly for Cleaning.....	14
	Changing Portion Ring	16
	Handle Disassembly/Assembly ...	19/21

PREPARATION AND FILLING

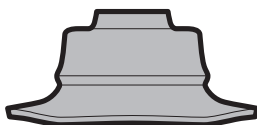
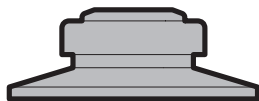


**WASH ALL PARTS IN
HOT, SOAPY WATER
BEFORE FIRST USE**



1

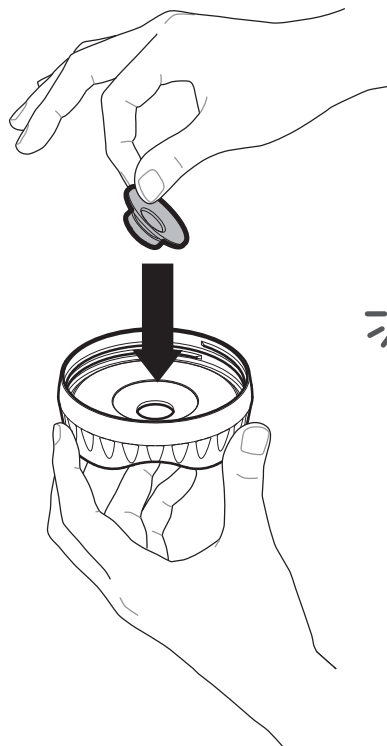
INSPECT VALVE



VALVE IS INSIDE-OUT

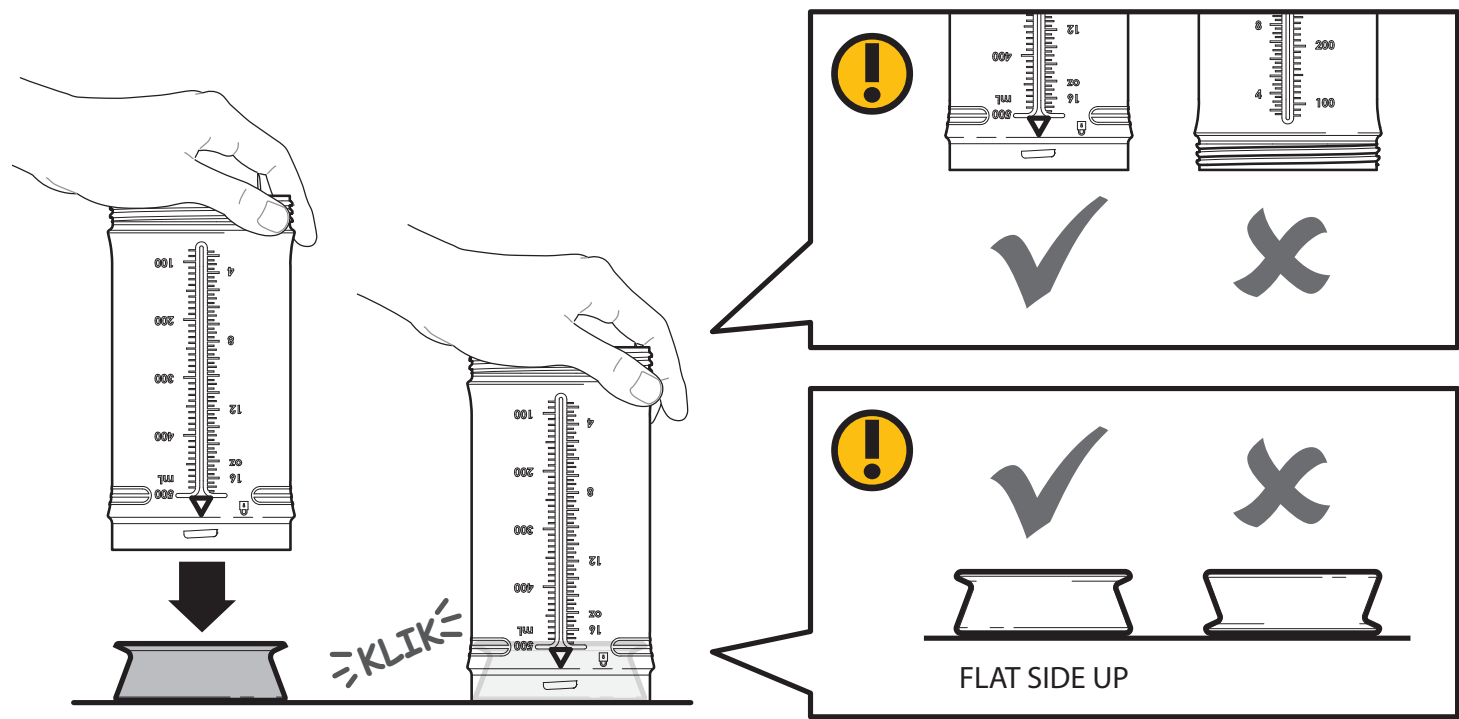
PREPARATION AND FILLING

2

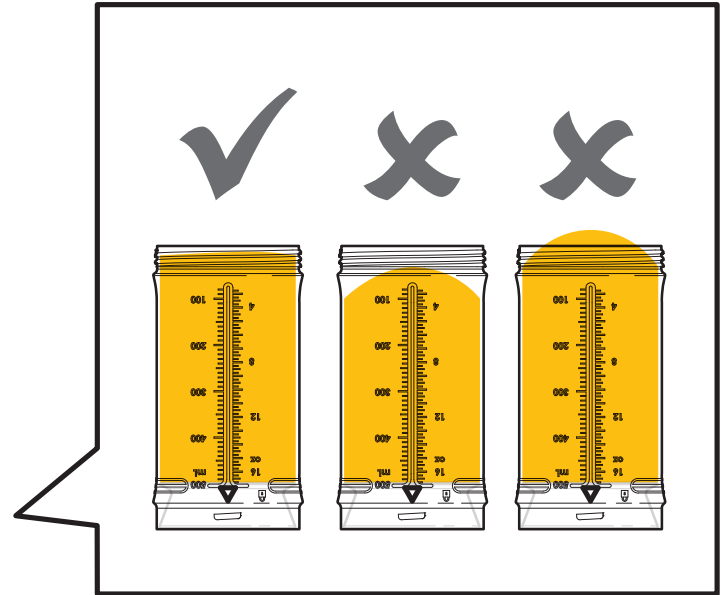
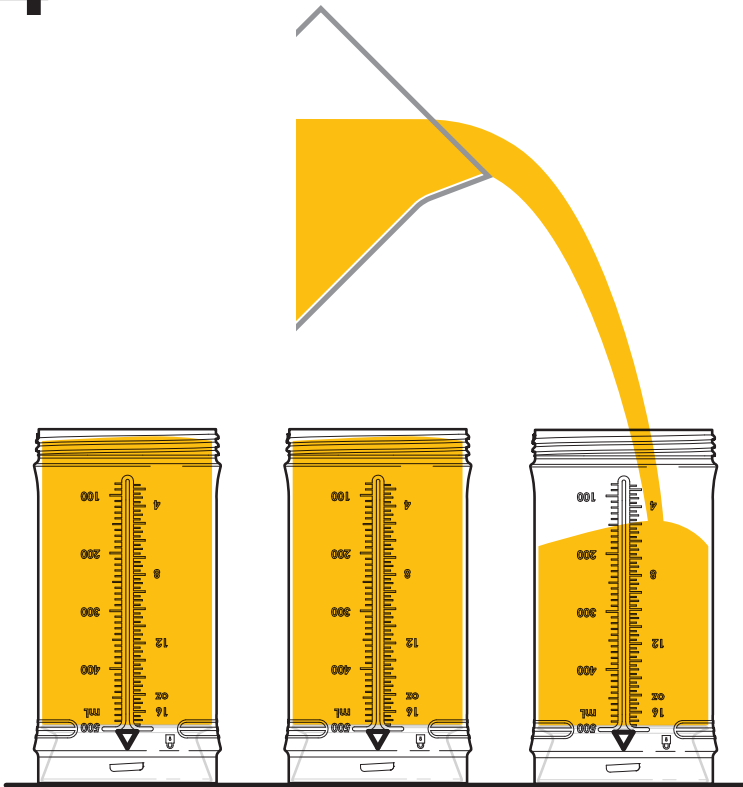


PREPARATION AND FILLING

3



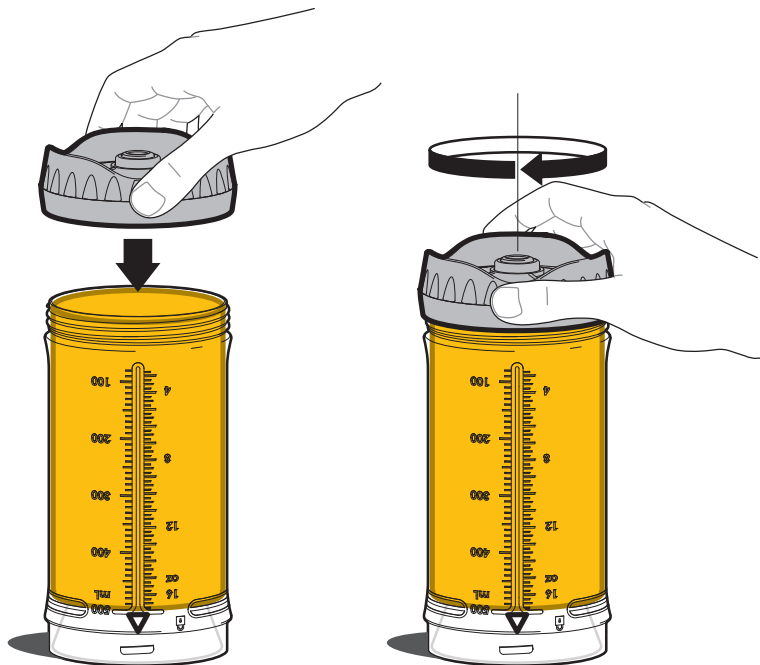
4



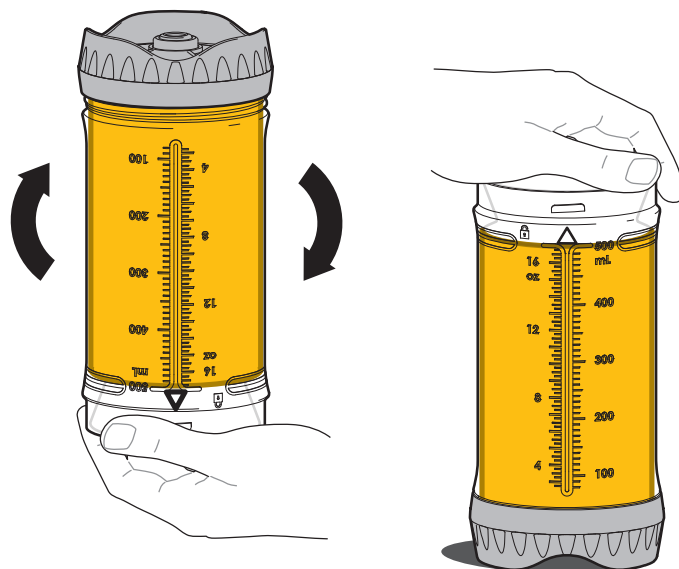
PRE-FILL ALL BOTTLES

PREPARATION AND FILLING

5



6

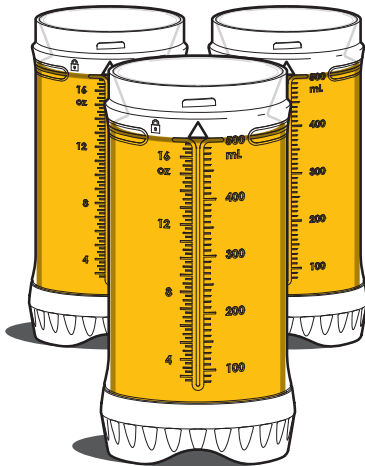


PLACE HAND UNDER
BOTTLE WHEN FLIPPING

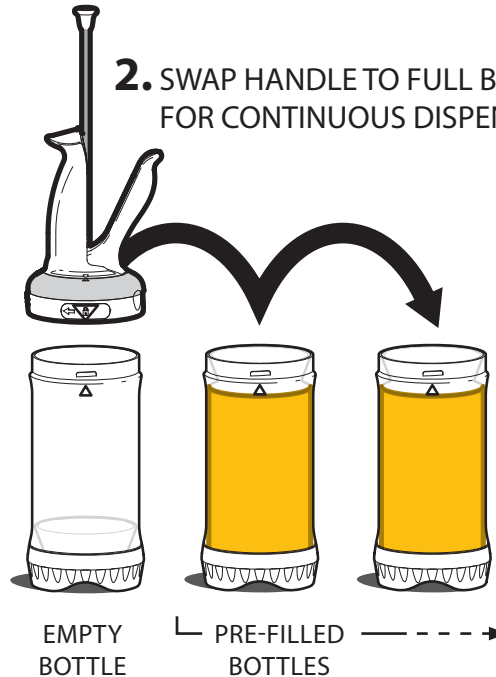


PORTION PAL WORKFLOW

1. PRE-FILL ALL BOTTLES IN ADVANCE

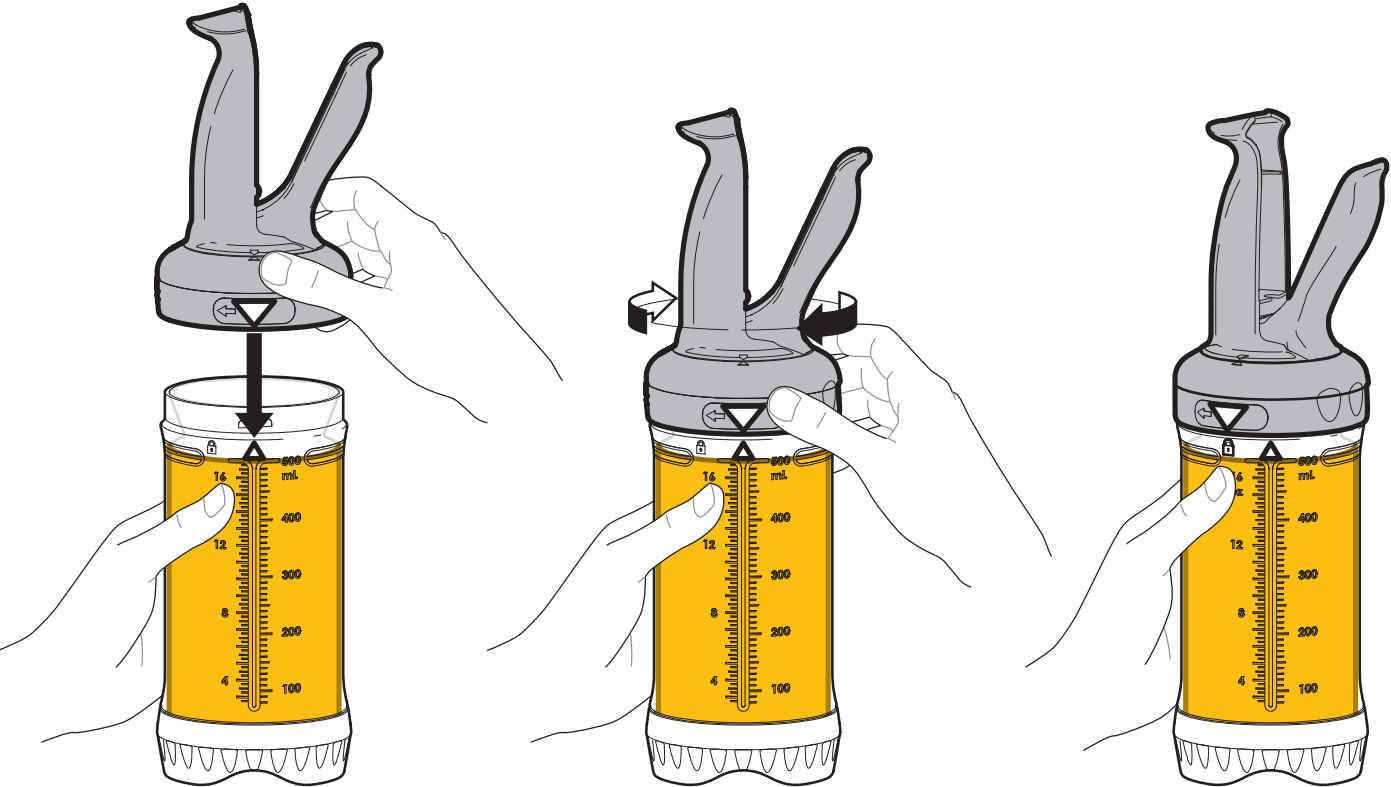


2. SWAP HANDLE TO FULL BOTTLES FOR CONTINUOUS DISPENSING

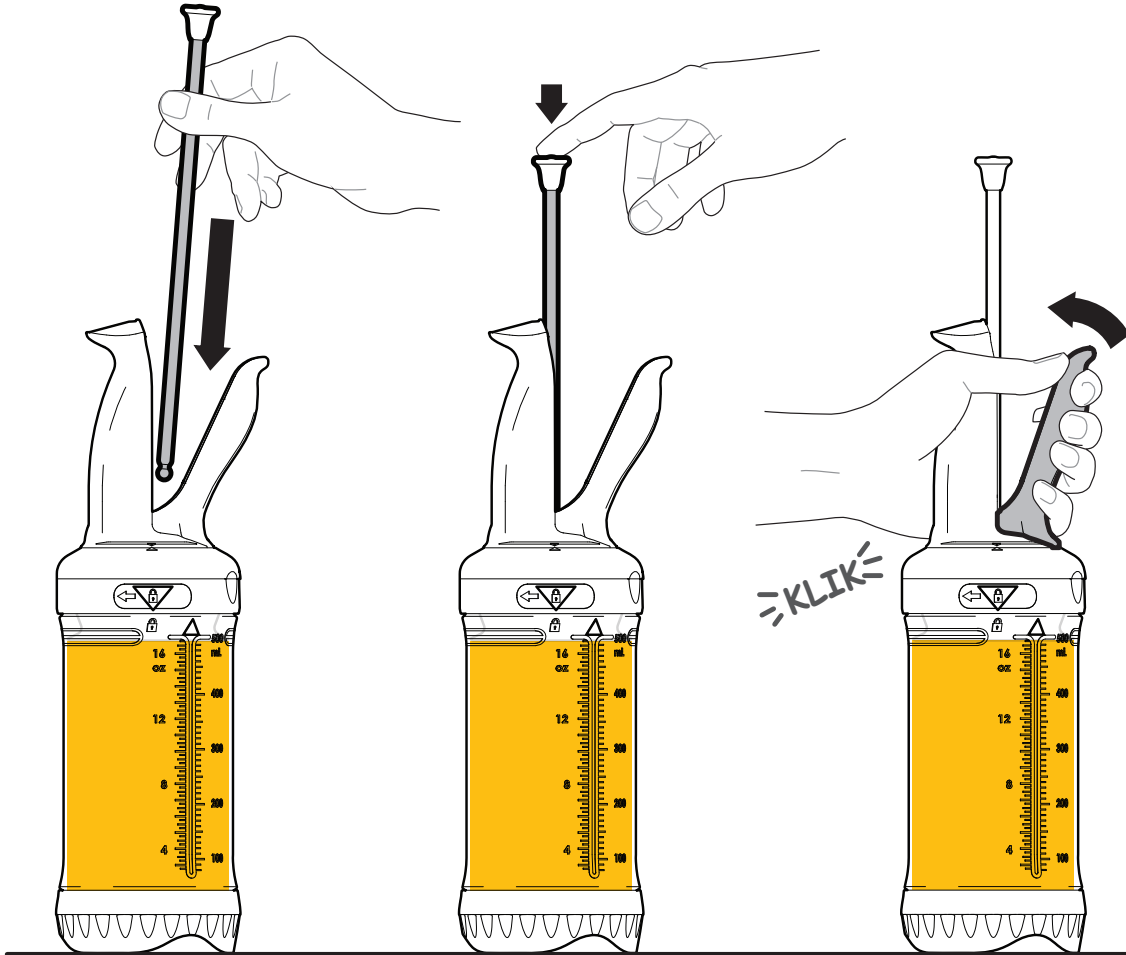


DISPENSING

1

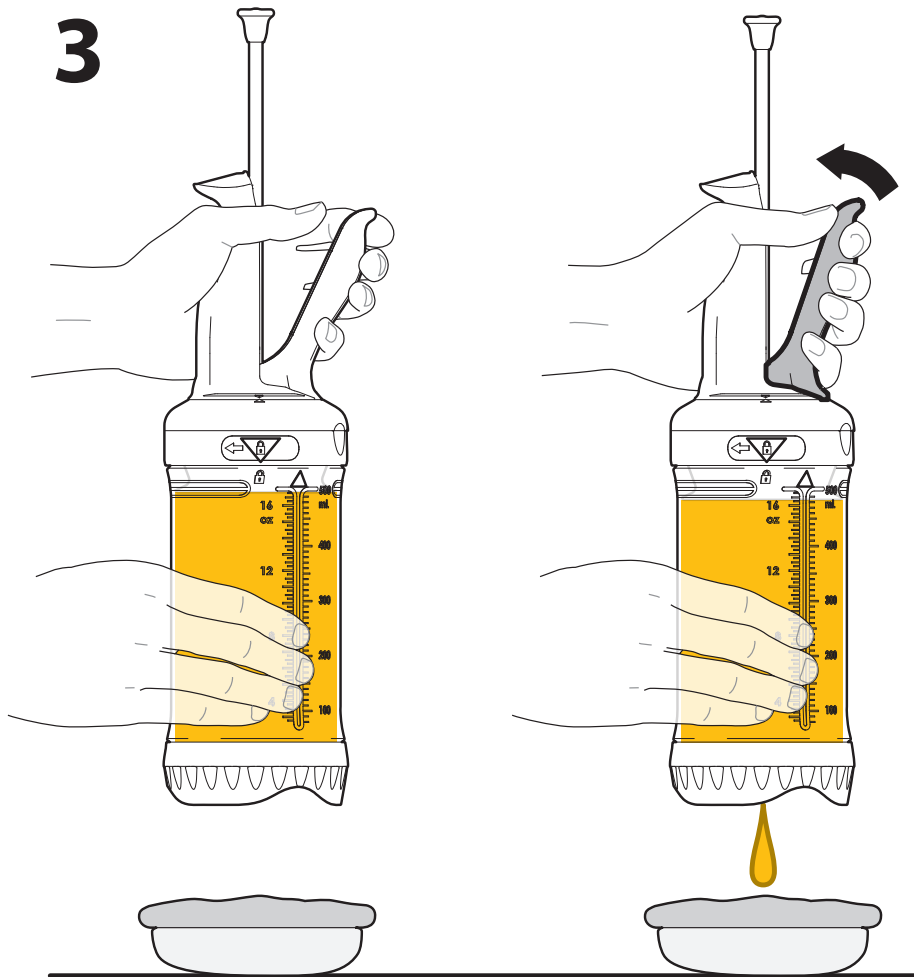


2



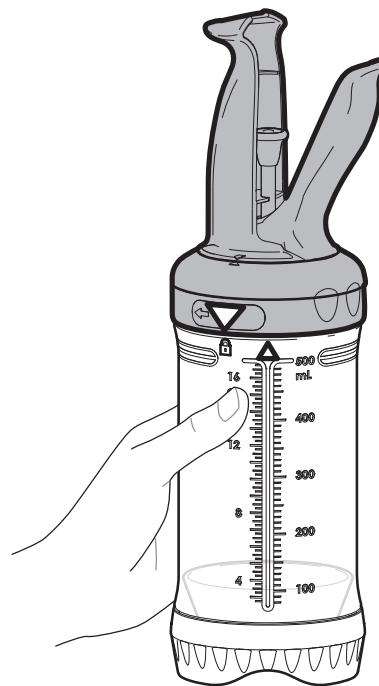
DISPENSING

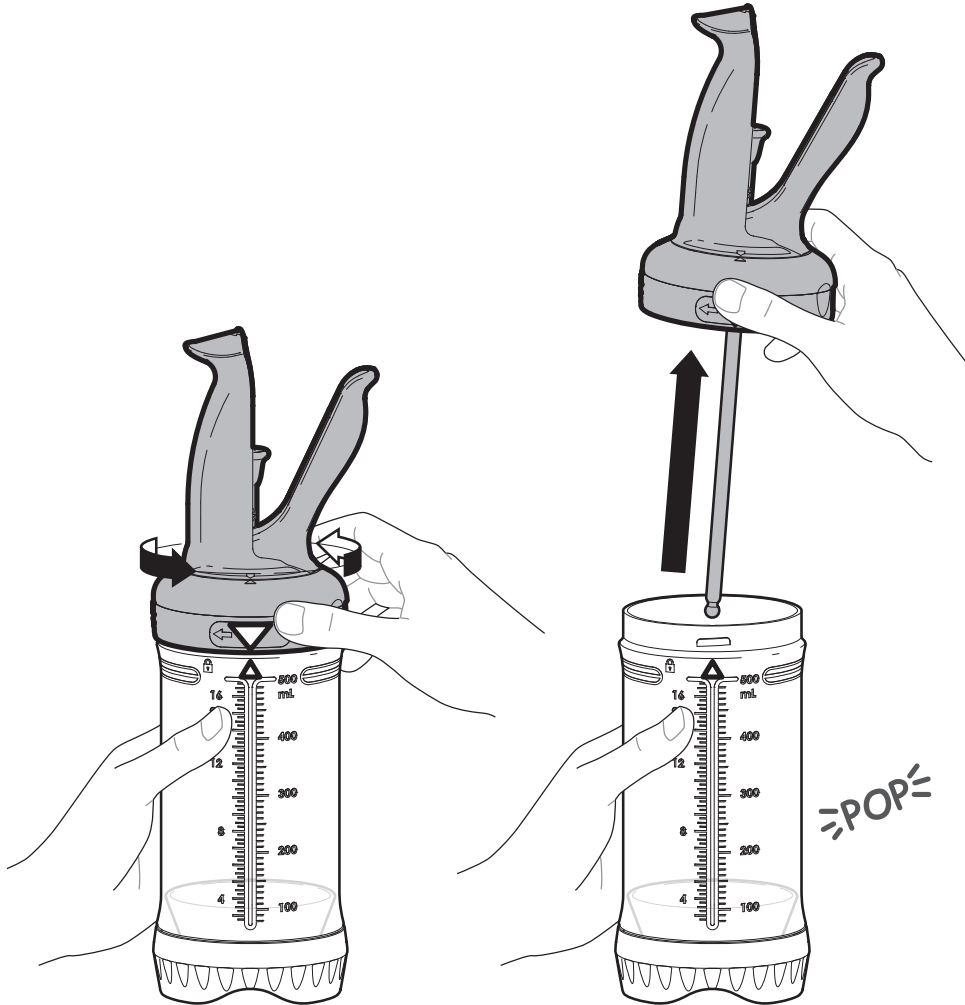
3



4

EMPTY BOTTLE



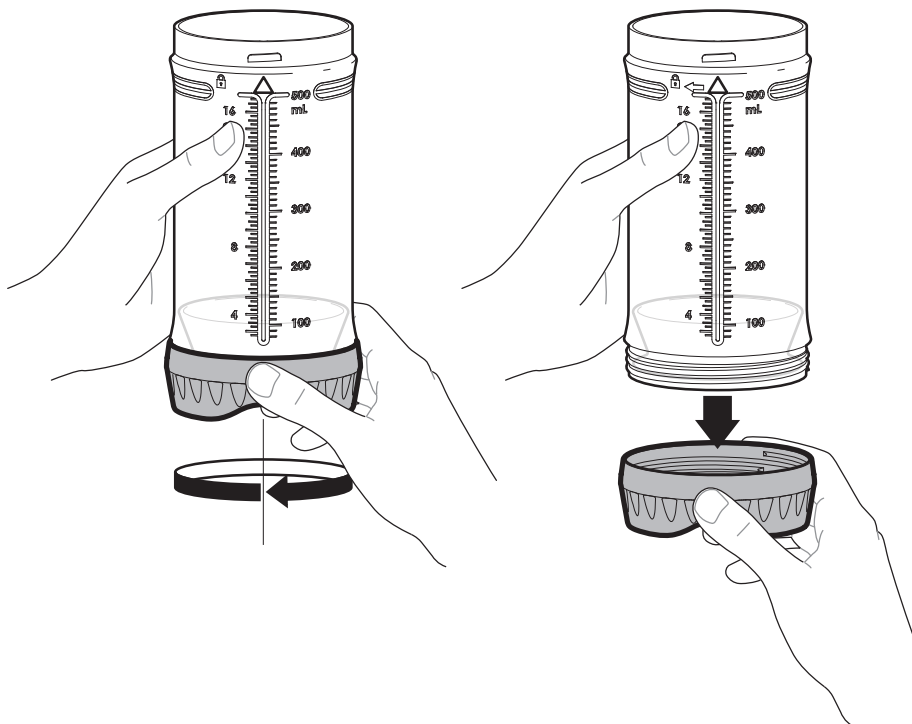


5

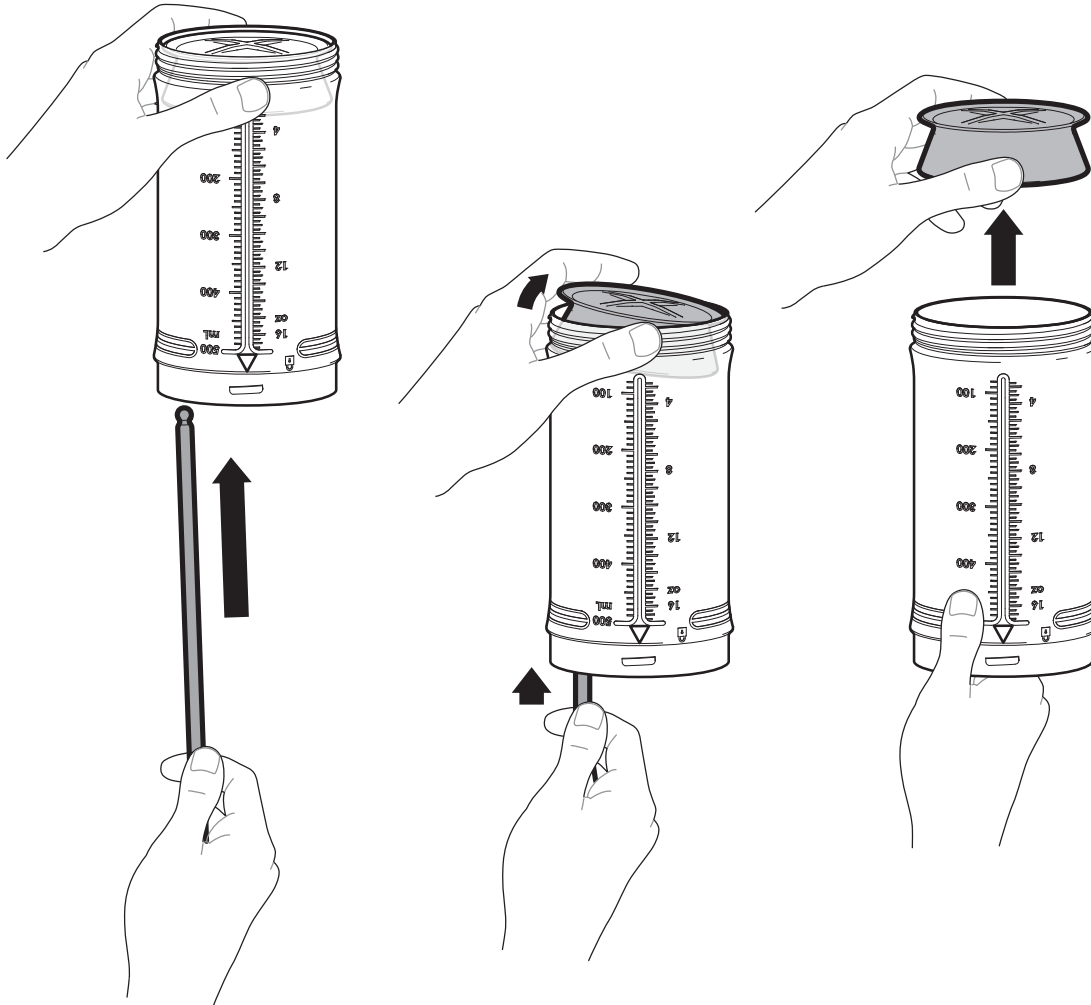


DISASSEMBLY FOR CLEANING

1

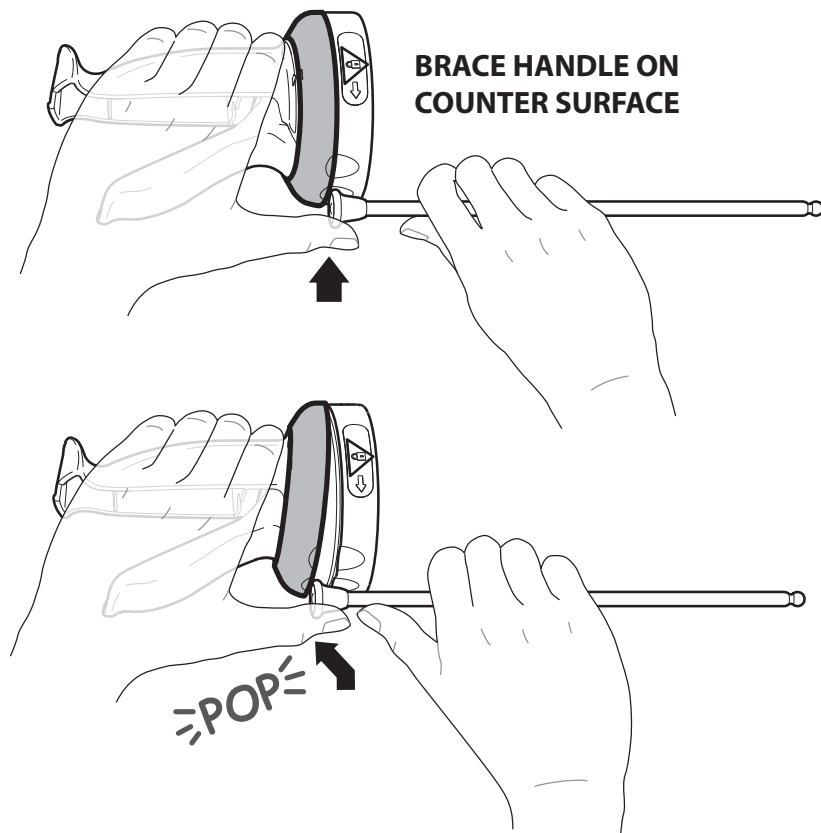


2

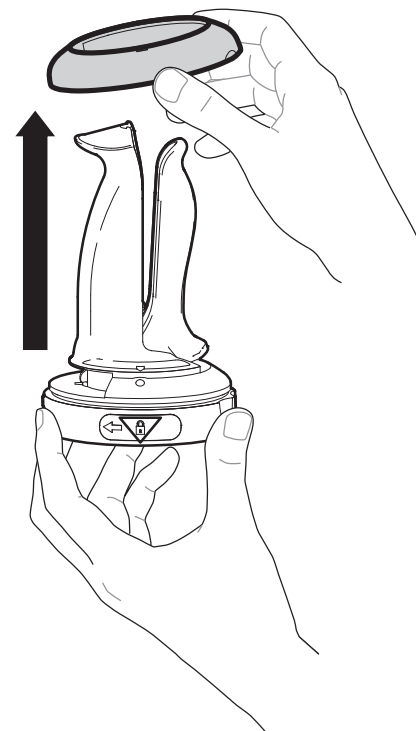


CHANGING PORTION RING

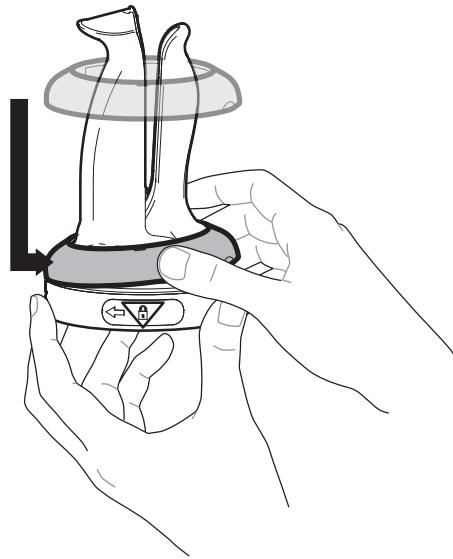
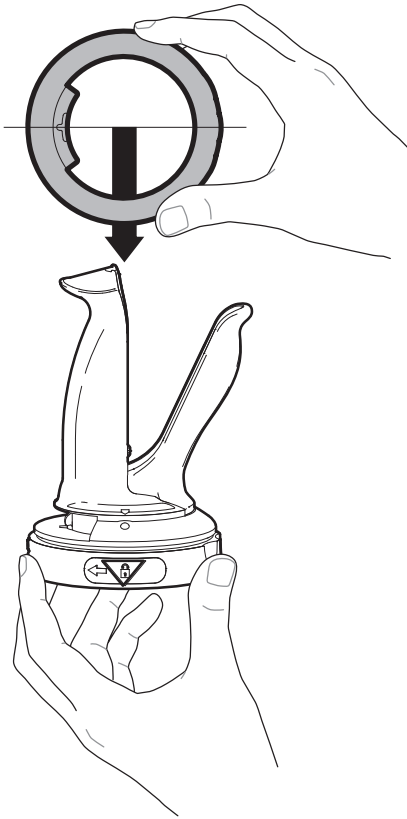
1



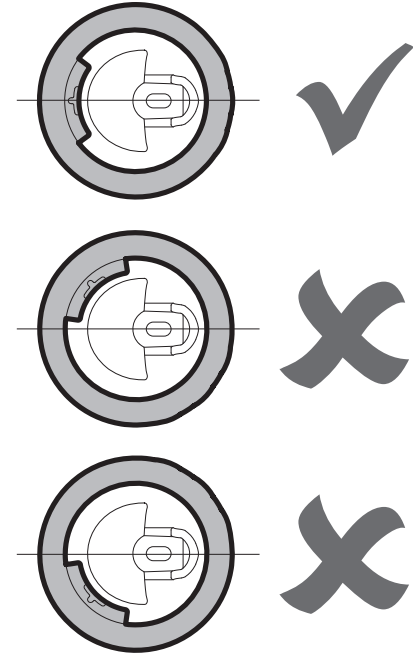
2



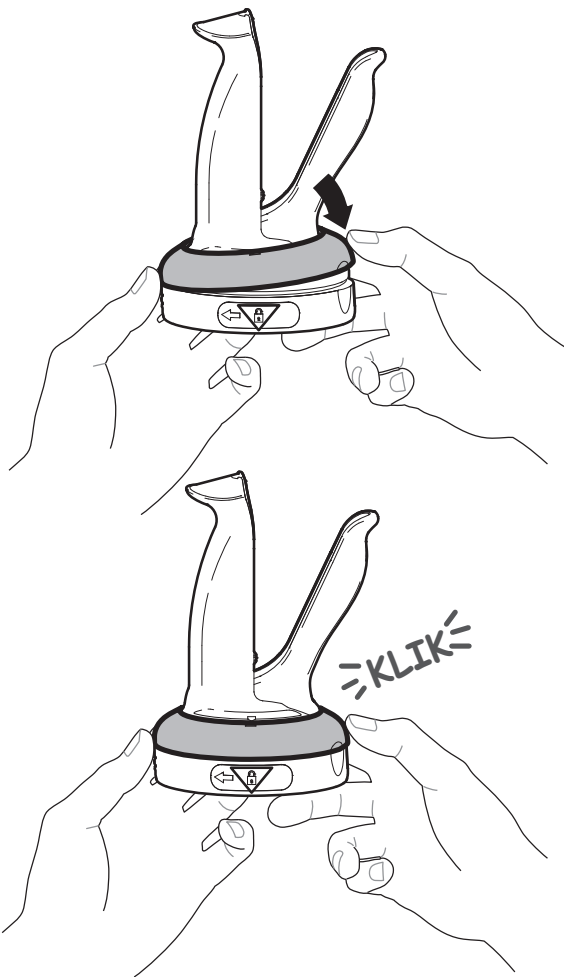
3



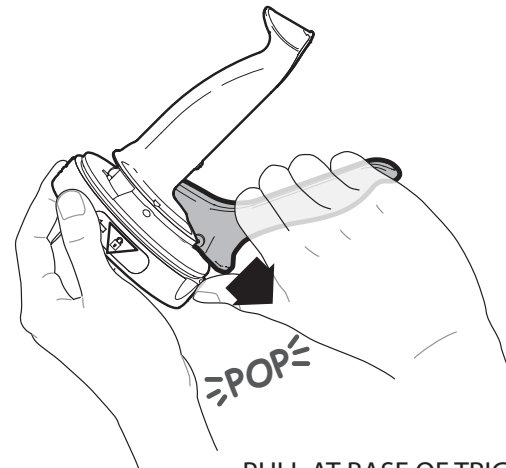
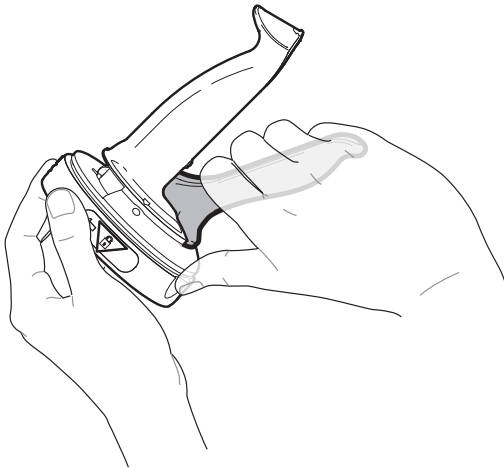
RING ALIGNMENT TOP VIEW



4

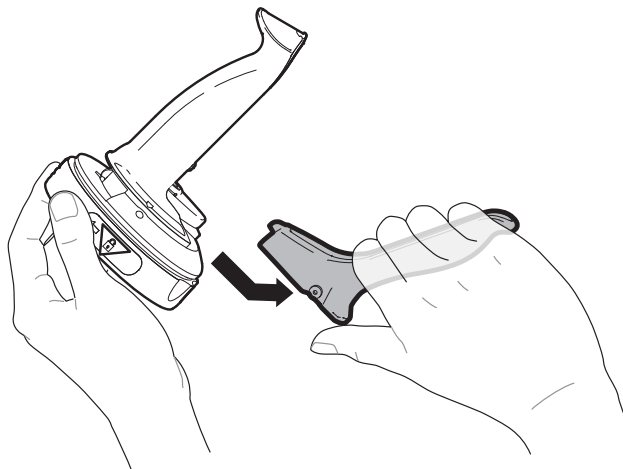


1



PULL AT BASE OF TRIGGER
IN ARROW DIRECTION

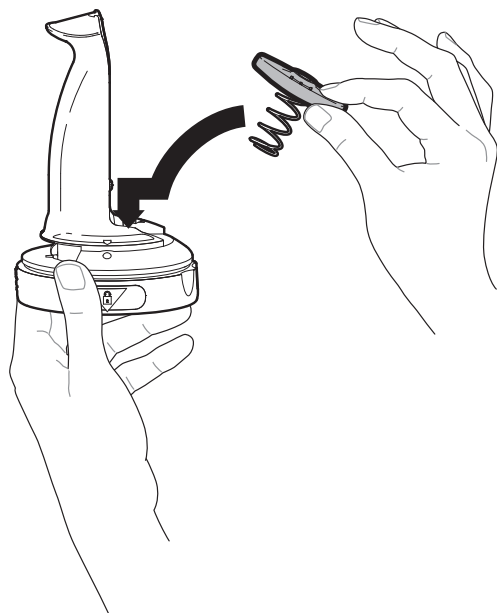
2



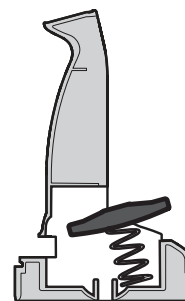
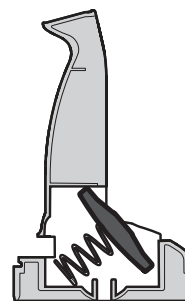
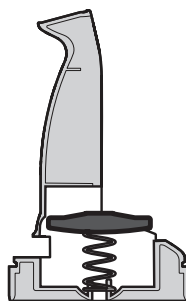
3



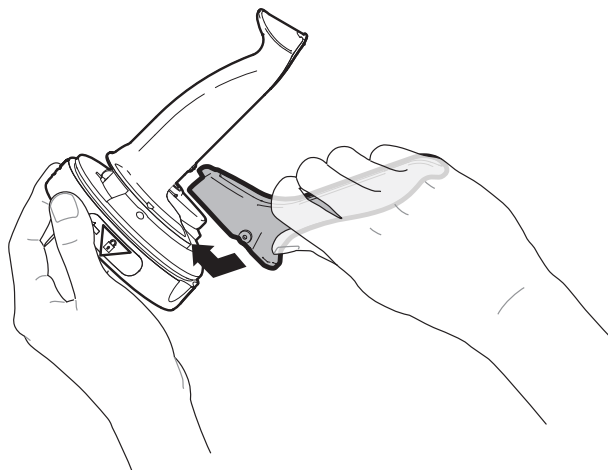
1



SPRING POSITION



2



3

